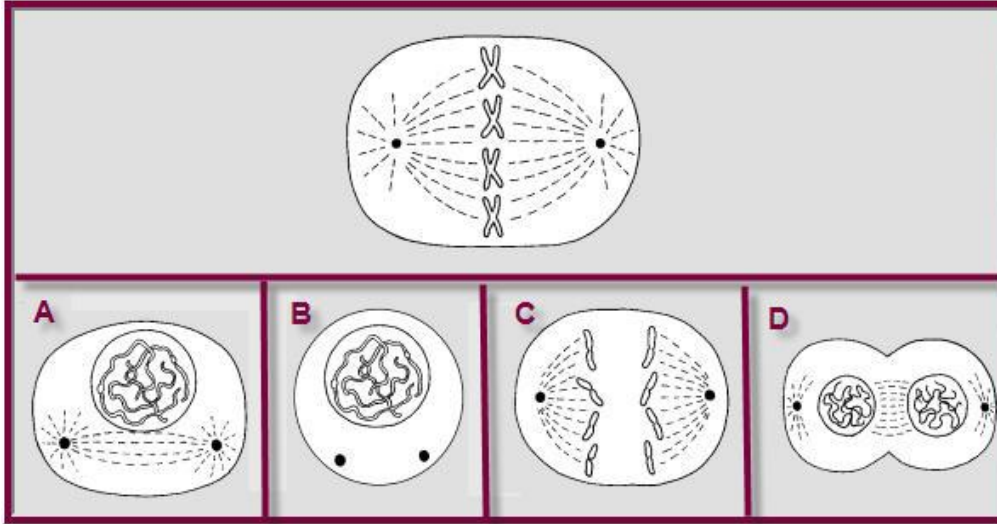


Name _____ Date _____

BIO SOL Review 13 - Reproduction - Mitosis, Meiosis (12 questions)



1. (2006-50) Which phase of mitosis would be seen next?

- A B **C** D

2. (2006-12) Meiosis is the process by which gametes are produced. In which of the following human organs does meiosis occur?

- a. Skin
- b. Pancreas
- c. Liver
- d. Testis**

3. (2001-9) The reduction of the chromosome number during meiosis is most important for:

- a. keeping the amount of DNA in the cell at a minimum level
- b. preventing the nucleus from becoming larger with each cell division
- c. maintaining the chromosome number during sexual reproduction**
- d. allowing the growth of the cell without increasing the DNA content

4. (2003-36) Which of these types of reproduction provides the most protection to developing offspring of land-dwelling animals?

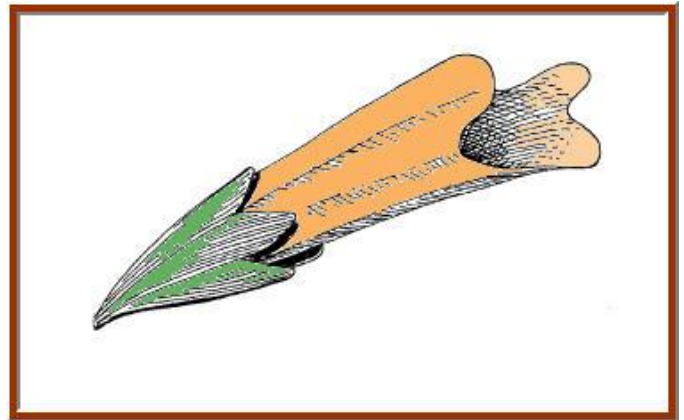
- a. An egg with a leathery shell
- b. An egg in a mass of jelly
- c. An egg carried internally**
- d. An egg in an eggshell

5. (2003-7) The jimsonweed *Datura stramonium*, normally has 12 chromosomes in the body cells. How many chromosomes will an egg cell of the weed have?

- a. 6 chromosomes**
- b. 12 chromosomes
- c. 24 chromosomes
- d. 18 chromosomes

6. (2004-30) The process of DNA replication is necessary before a cell —

- a. codes for RNA molecules
- b. modifies lysosome enzymes
- c. divides into two cells**
- d. makes a protein

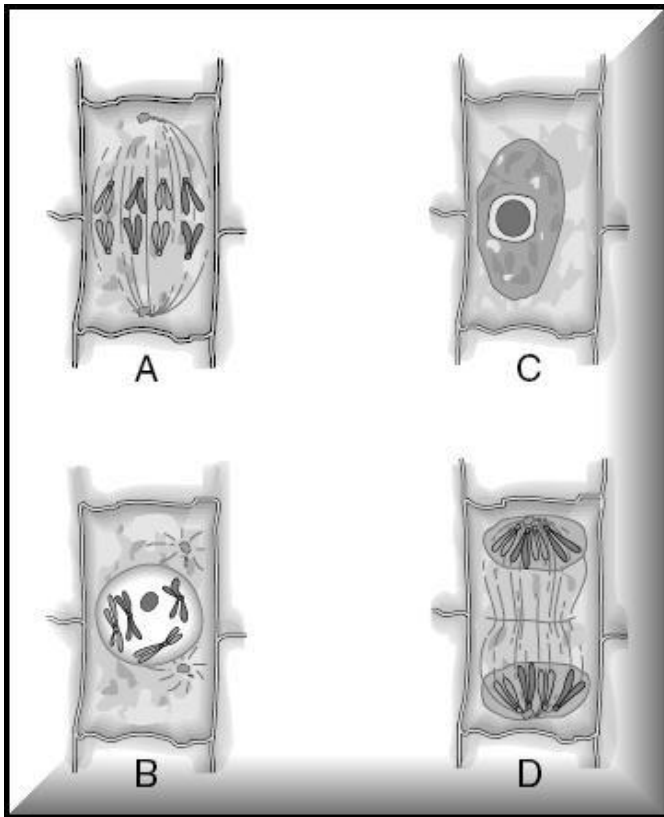


7. (2001-28) A flower with this shape would use what type of pollinator?

- a. Mammal
- b. Wind
- c. Rain
- d. Hummingbird**

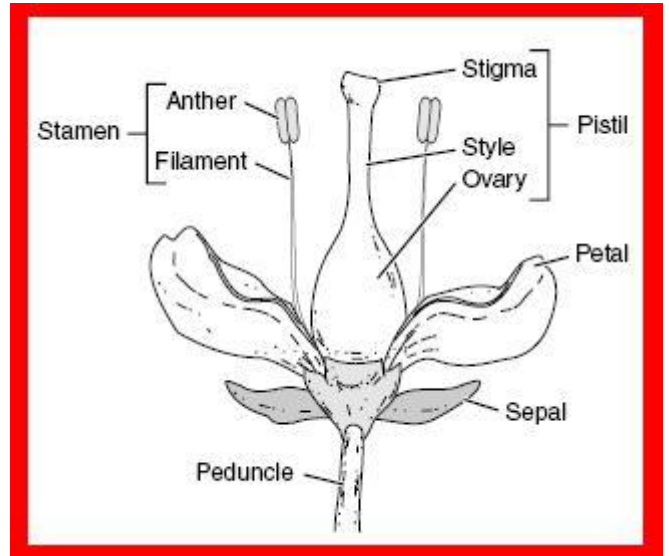
8. (2004-15) The processes of meiosis and fertilization help ensure the survival of the species by providing each generation with the same number of —

- a. chromosomes**
- b. offspring
- c. gametes
- d. body cells



9. (2001-2) What is the correct sequence for plant cell mitosis?

- a. A, B, D, C
- b. C, B, A, D**
- c. B, A, D, C
- d. D, C, B, A

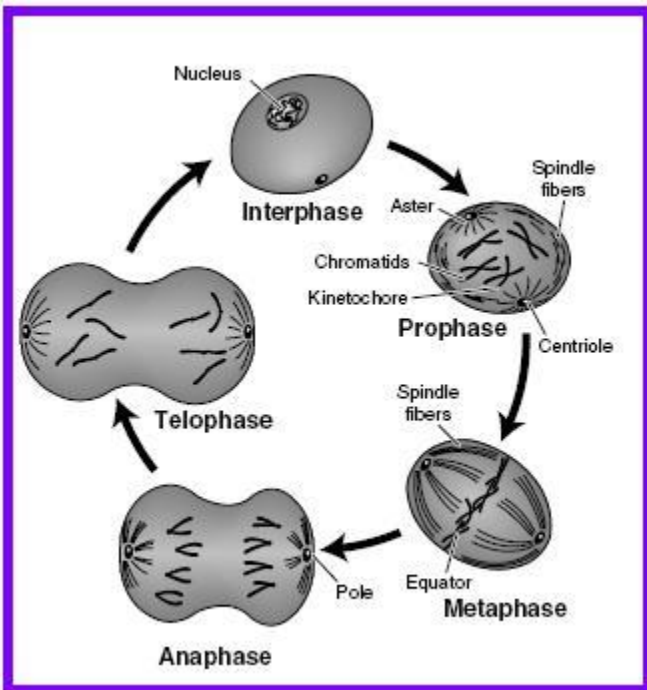


11. (2003-44) In which part of the flower does fertilization take place? (1 point)

- a. Sepal
- b. Petal
- c. Stamen
- d. Pistil**

12. (2004-21) In plants, gymnosperms have cones and angiosperms have flowers. Both of these plant structures are specialized for —

- a. water absorption
- b. photosynthesis
- c. sexual reproduction**
- d. food production



10. (2005-10) Which of the following phases is the first step in mitosis?

- a. Prophase**
- b. Telophase
- c. Metaphase
- d. Anaphase