

VIRGINIA STANDARDS OF LEARNING

Spring 2008 Released Test

# GRADE 3 SCIENCE

---

Form S0118, CORE 1

**Property of the Virginia Department of Education**

©2008 by the Commonwealth of Virginia, Department of Education, P.O. Box 2120, Richmond, Virginia 23218-2120. All rights reserved. Except as permitted by law, this material may not be reproduced or used in any form or by any means, electronic or mechanical, including photocopying or recording, or by any information storage or retrieval system, without written permission from the copyright owner. Commonwealth of Virginia public school educators may reproduce any portion of these released tests for non-commercial educational purposes without requesting permission. All others should direct their written requests to the Virginia Department of Education, Division of Student Assessment and School Improvement, at the above address or by e-mail to [Student\\_Assessment@doe.virginia.gov](mailto:Student_Assessment@doe.virginia.gov).



## Directions

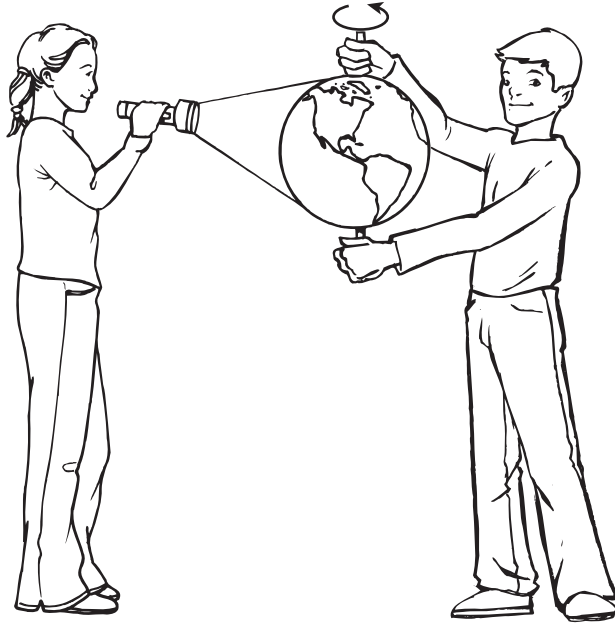
Read each question and choose the best answer. Then fill in the circle on your answer document for the answer you have chosen.

### **SAMPLE**

**When the Earth is seen from outer space, it looks mainly blue. This is because most of the Earth is covered with —**

- A** ice
- B** mountains
- C** oceans
- D** deserts

1



**A student holds a model of Earth that can rotate on a stick. Another student shines a flashlight on the model as it turns. This model is MOST likely used to show —**

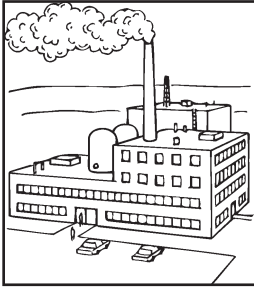
- A** high and low tides
- B** seasons changing
- C** day and night
- D** phases of the Moon

**2 Which of these dissolve in water?**

- F** Sand grains
- G** Sugar cubes
- H** Plastic straws
- J** Wooden spoons

**3 Which will have a bad effect on the air people breathe?**

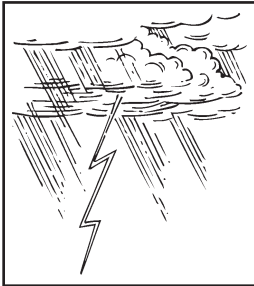
**A**



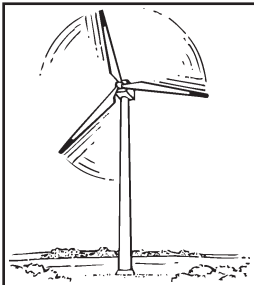
**B**



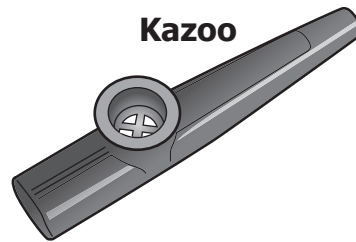
**C**



**D**



4



**A kazoo is a toy that makes a sound when a person hums into it. Sound comes out of the kazoo because it —**

- F** is shiny
- G** can float
- H** is plastic
- J** can vibrate

**5 Most plants begin their life cycle as —**

- A** leaves
- B** flowers
- C** roots
- D** seeds

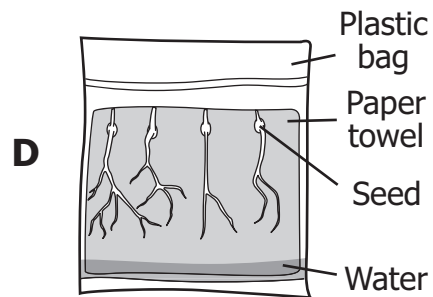
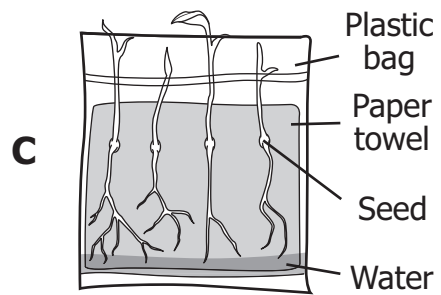
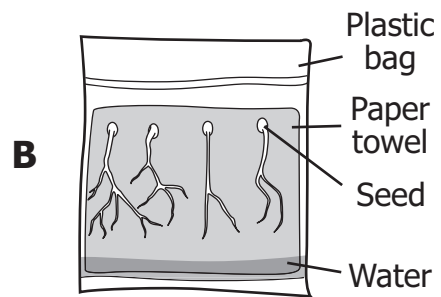
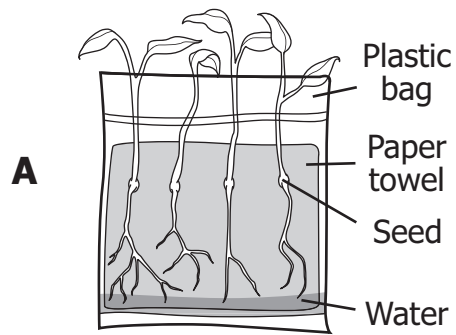
6



Which of these is the **BEST** title for the picture?

- F** How Magnets Attract
- G** Using the Sense of Touch
- H** How to Measure Distance
- J** Using a Magnetic Compass

**7** Students grew some seeds in a plastic bag. They then took a picture each day to have a record of growth. Which of these is probably the first picture the students took?

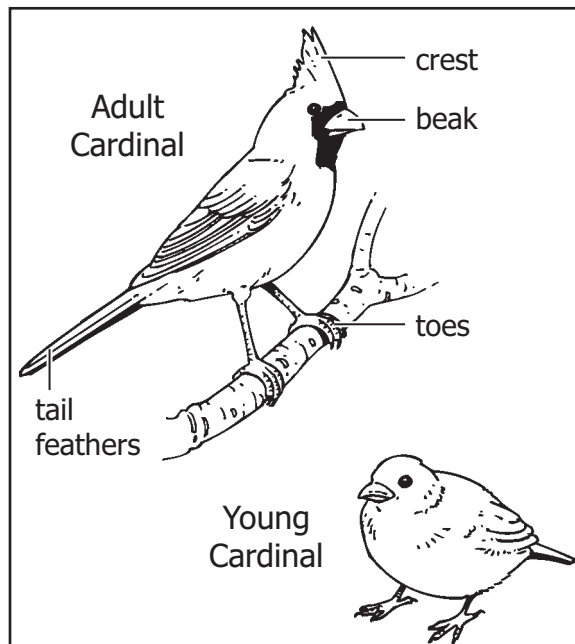




**8 Where will a sidewalk feel hottest on a warm, clear day?**

- F** Under a picnic table
- G** In direct sunlight
- H** Under a puddle
- J** In the shade

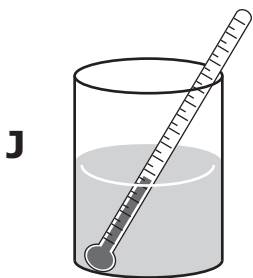
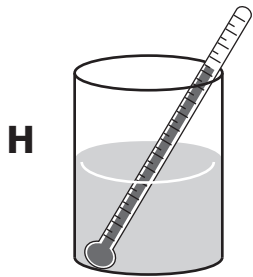
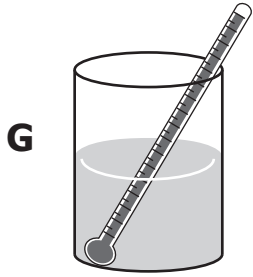
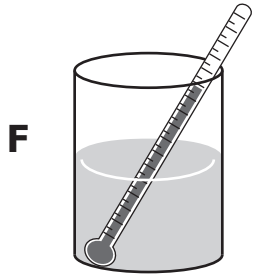
**9**



**Which is one way the young male cardinal will change as it grows up?**

- A** It will grow more toes.
- B** Its tail feathers will become shorter.
- C** It will grow a pointed crest.
- D** Its beak will become long and narrow.

10 Which of these contains the coldest water?



**11**

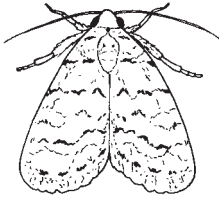


**These living things are in a pond food chain. Which of these are producers?**

- A** Algae
- B** Dragonflies
- C** Frogs
- D** Snakes

**12 Which animal looked MOST like its parents when it hatched?**

**F**



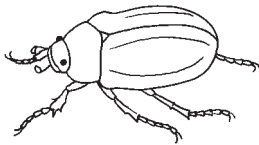
Moth

**G**



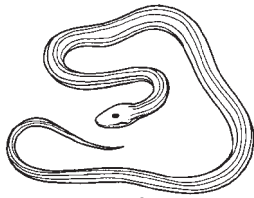
Frog

**H**



Beetle

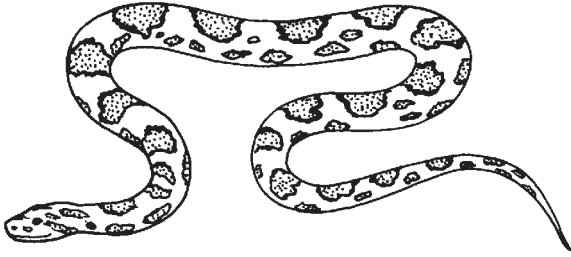
**J**



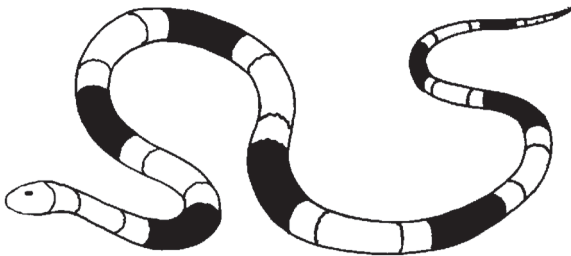
Snake

13 On her vacation, Mrs. Smith saw a snake. The snake was a solid color and had dark rings around its head. Which is MOST like the snake Mrs. Smith saw?

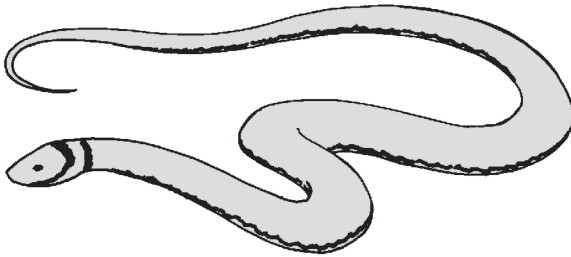
A



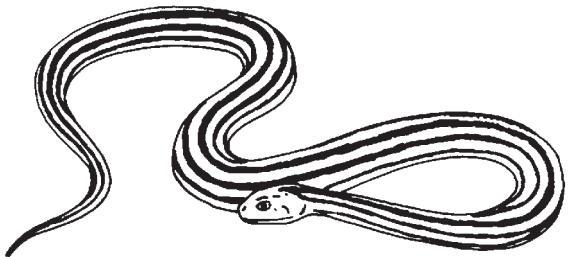
B



C



D



**14 Which of these is the BEST reason to study weather?**

- F** To be prepared for storms
- G** To learn how fossils are formed
- H** To see changing phases of the Moon
- J** To find ways for animals to live longer

**15**

**Pickle Types**

<b>Name</b>	<b>Made From</b>
Dill Pickle	Cucumber and sour spices
Zesty Pickle	Cucumber and hot spices
Candied Pickle	Cucumber and sugar and spice
Pickled Pepper	Hot peppers

**Based on the chart, which pickle will MOST likely taste sweet?**

- A** Dill pickles
- B** Zesty pickles
- C** Candied pickles
- D** Pickled peppers

**16 Which of these is MOST likely a behavior of tame animals that is different from wild animals?**

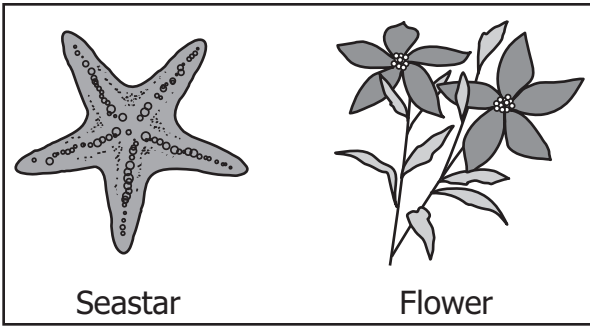
- F** Moving to a warmer climate in winter
- G** Eating out of the hands of humans
- H** Hunting for their own food
- J** Staying away from people

**17 An ice cube placed in sunlight melts quickly. Which BEST explains this event?**

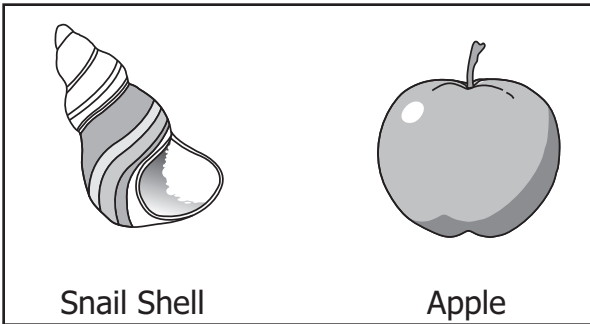
- A** The Sun is far away.
- B** The Sun makes heat.
- C** The ice cube is a solid.
- D** The ice cube looks clear.

**18 Which picture shows objects with shapes MOST alike?**

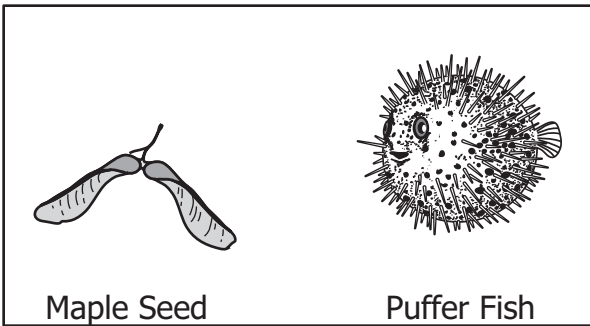
**F**



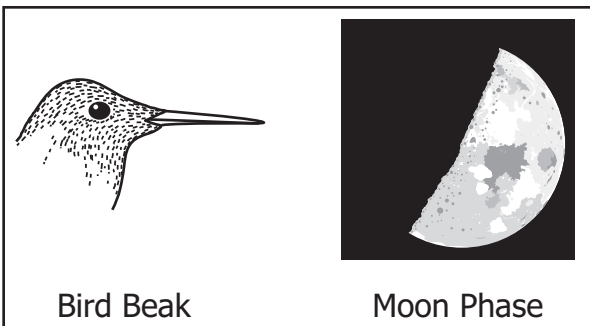
**G**



**H**



**J**

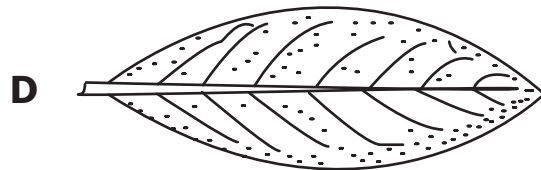
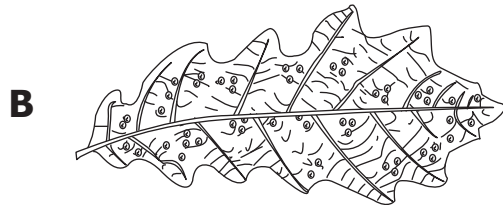
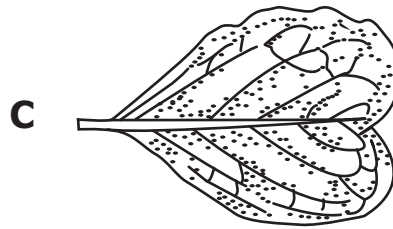
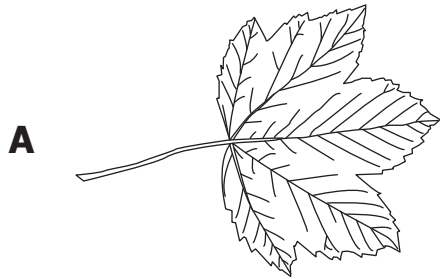




19 A student looks at a leaf and writes down how it looks. Which of these BEST matches the leaf the student looked at?

**Leaf Shape**

Long
Narrow
Pointed End
Smooth Edge



**20 Which of these is an example of something being recycled?**

- F** Taking glass bottles to a place that makes them into new bottles
- G** Using the same foil to cover food several times
- H** Wrapping glasses with newspaper to put them in a moving box
- J** Carrying lunch to school every day in the same plastic bag

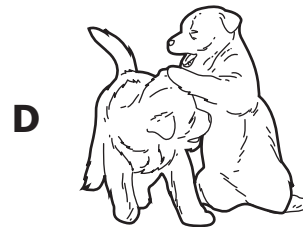
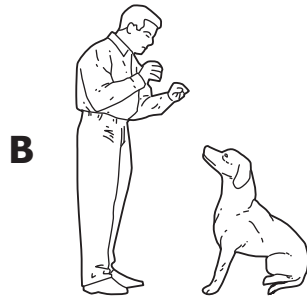
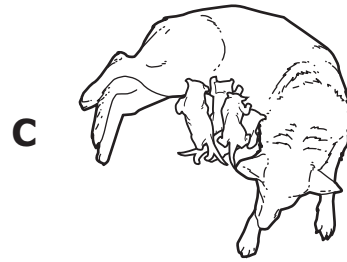
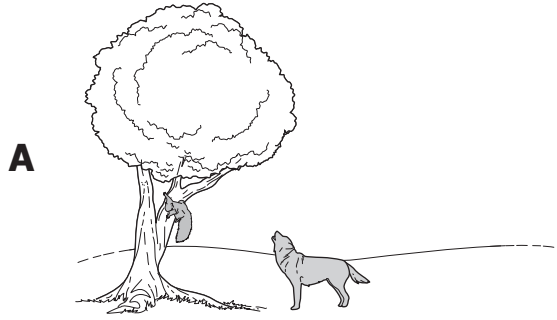
**21 Which of these is MOST likely made from only one material?**

- A** A pencil
- B** A bicycle
- C** A paper clip
- D** A pair of shoes

**22 A sign that an apple tree is going to start growing apples is when the tree has —**

- F** roots
- G** seeds
- H** leaves
- J** flowers

**23 Which picture BEST shows a learned behavior in a dog?**



**24 While a sailor was out fishing, he got lost at sea. Which object would help him direct the boat back to shore?**

- F** Rope
- G** Magnetic compass
- H** Blanket
- J** Measuring tape

**25 Which two senses would BEST help a person measure hair length?**

- A** Taste and smell
- B** Touch and sight
- C** Sight and hearing
- D** Smell and hearing

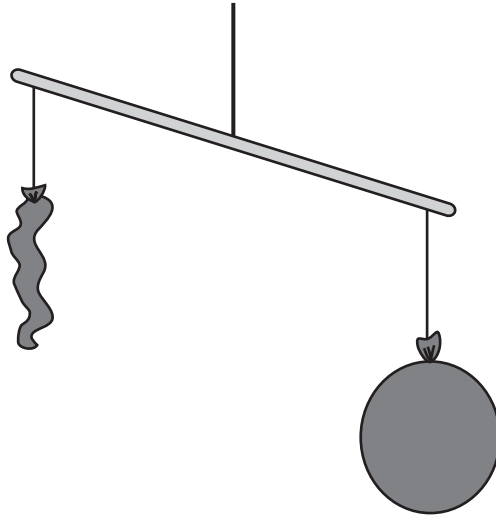
**26 Which of these is MOST flexible?**

- F** Broom handle
- G** Wooden ruler
- H** Drinking straw
- J** Sewing needle



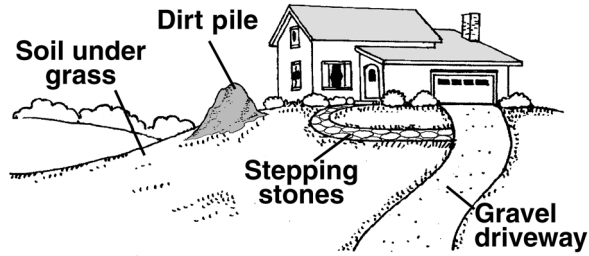
**After winter, which of these will MOST likely make a tree start to bud?**

- A** More wind
- B** Fewer clouds in the sky
- C** Less rainfall
- D** More hours of daylight

**Balloon Balance**

The picture shows a balance. One side of the balance holds an empty balloon. The other side holds the same kind of balloon full of air. Which of these is shown by the balance?

- F** Air is solid.
- G** Air has heat.
- H** Air has mass.
- J** Air is energy.



**Which thing near this house will wash away the MOST during a heavy rain?**

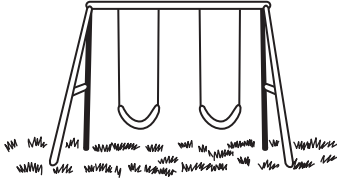
- A** Gravel driveway
- B** Dirt pile
- C** Stepping stones
- D** Soil under grass

**30 For a plant to stay alive indoors, where does it need to be placed?**

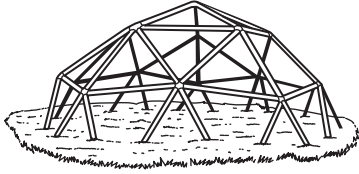
- F** In a dry area
- G** In a dark room
- H** On a plant stand
- J** Near a sunny place

**31 Which of these is an example of a lever?**

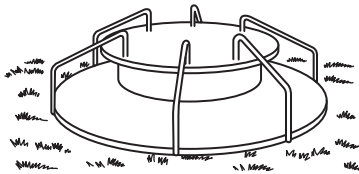
**A**



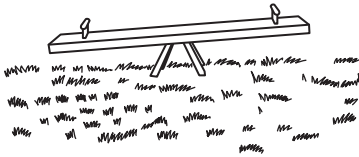
**B**



**C**



**D**



**32 Students want to know how big the leaves of an oak tree are. The BEST way to measure the size of the leaves is to —**

- F** read a story
- G** use a ruler
- H** cut up some leaves
- J** use a magnifying glass



**33 Soil is important to a forest because the soil —**

- A** stores sunlight in the leaves
- B** attracts insects that eat leaves
- C** provides nutrients to the trees
- D** warms the air around the trees

**34 A student is asked to bring something that feels rough to class. Which would be BEST for him to bring?**

- F** Pillow
- G** Marble
- H** Sandpaper
- J** Trading card

**35** A black bear eats many different things, including grasses, roots, and berries. It also eats insects, fish, and other small animals. Which of these BEST describes a black bear?

- A** Omnivore
- B** Carnivore
- C** Herbivore
- D** Producer

**36**



**About how wide is this pinecone?**

- F** 1 inch
- G** 2 inches
- H** 3 inches
- J** 4 inches



©iStockphoto #921189

**Which of the following is one nonliving part in the habitat of a bluebird?**

- A** Insects they eat
- B** Air they breathe
- C** Hawks that eat them
- D** Plants they use for nests

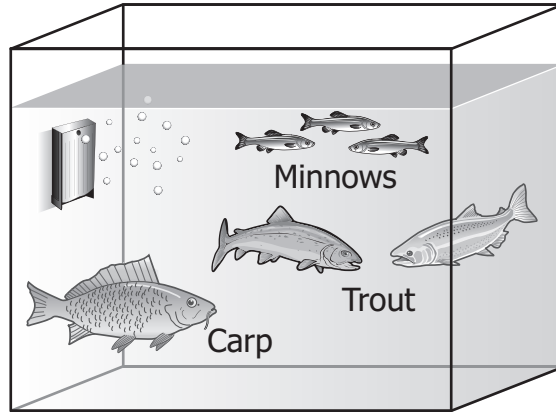
**38 Ice cubes are an example of which form of water?**

- F** Gas
- G** Liquid
- H** Solid
- J** Natural

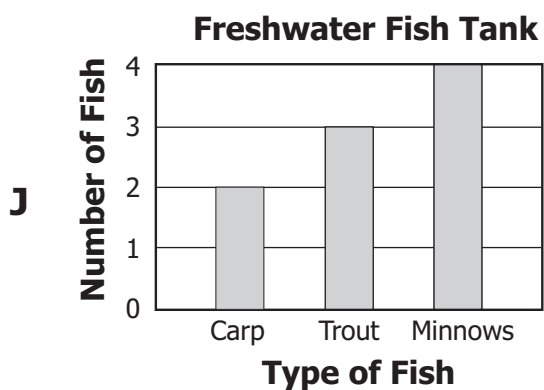
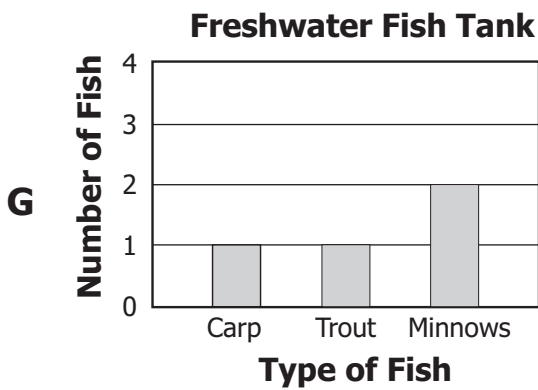
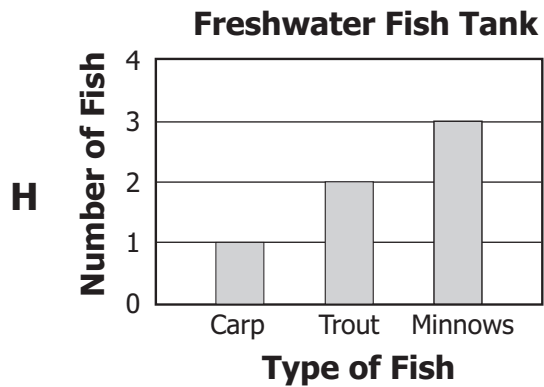
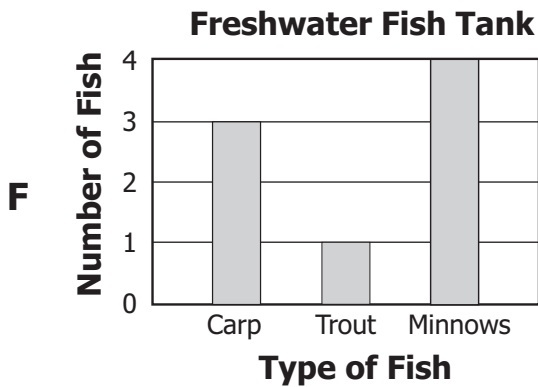
**39 Martina only washes her sweater after she has worn it several times. Martina is helping the environment by —**

- A** wasting water
- B** reusing water
- C** recycling water
- D** conserving water

**Freshwater Fish Tank**



Which graph shows the correct type and number of fish in the fish tank?



### Answer Key-3005-S0118

Test Sequence Number	Correct Answer	Reporting Category	Reporting Category Description
1	C	004	Earth / Space Systems and Cycles
2	G	002	Force, Motion, Energy, and Matter
3	A	004	Earth / Space Systems and Cycles
4	J	002	Force, Motion, Energy, and Matter
5	D	003	Life Processes and Living Systems
6	F	002	Force, Motion, Energy, and Matter
7	B	001	Scientific Investigation, Reasoning, and Logic
8	G	004	Earth / Space Systems and Cycles
9	C	003	Life Processes and Living Systems
10	J	001	Scientific Investigation, Reasoning, and Logic
11	A	003	Life Processes and Living Systems
12	J	003	Life Processes and Living Systems
13	C	001	Scientific Investigation, Reasoning, and Logic
14	F	004	Earth / Space Systems and Cycles
15	C	001	Scientific Investigation, Reasoning, and Logic
16	G	003	Life Processes and Living Systems
17	B	001	Scientific Investigation, Reasoning, and Logic
18	F	004	Earth / Space Systems and Cycles
19	D	001	Scientific Investigation, Reasoning, and Logic
20	F	004	Earth / Space Systems and Cycles
21	C	002	Force, Motion, Energy, and Matter
22	J	003	Life Processes and Living Systems
23	B	003	Life Processes and Living Systems
24	G	002	Force, Motion, Energy, and Matter
25	B	001	Scientific Investigation, Reasoning, and Logic
26	H	002	Force, Motion, Energy, and Matter
27	D	004	Earth / Space Systems and Cycles
28	H	002	Force, Motion, Energy, and Matter
29	B	004	Earth / Space Systems and Cycles
30	J	003	Life Processes and Living Systems
31	D	002	Force, Motion, Energy, and Matter
32	G	001	Scientific Investigation, Reasoning, and Logic
33	C	004	Earth / Space Systems and Cycles
34	H	002	Force, Motion, Energy, and Matter
35	A	003	Life Processes and Living Systems
36	F	001	Scientific Investigation, Reasoning, and Logic
37	B	003	Life Processes and Living Systems
38	H	002	Force, Motion, Energy, and Matter
39	D	004	Earth / Space Systems and Cycles
40	H	001	Scientific Investigation, Reasoning, and Logic

### Grade 3 Science, Core 1

If you get this many items correct:	Then your converted scale score is:
0	000
1	104
2	148
3	175
4	195
5	211
6	224
7	236
8	247
9	257
10	266
11	274
12	283
13	291
14	298
15	306
16	313
17	320
18	327
19	334
20	341
21	348
22	355
23	362
24	370
25	377
26	384
27	392
<b>28</b>	<b>400</b>
29	409
30	418
31	427
32	437
33	448
34	461
35	475
36	491
<b>37</b>	<b>511</b>
38	539
39	583
40	600

